

# INTELLO<sup>®</sup> PLUS connection strip

High-performance reinforced vapour check connection strip



## Technical Data:

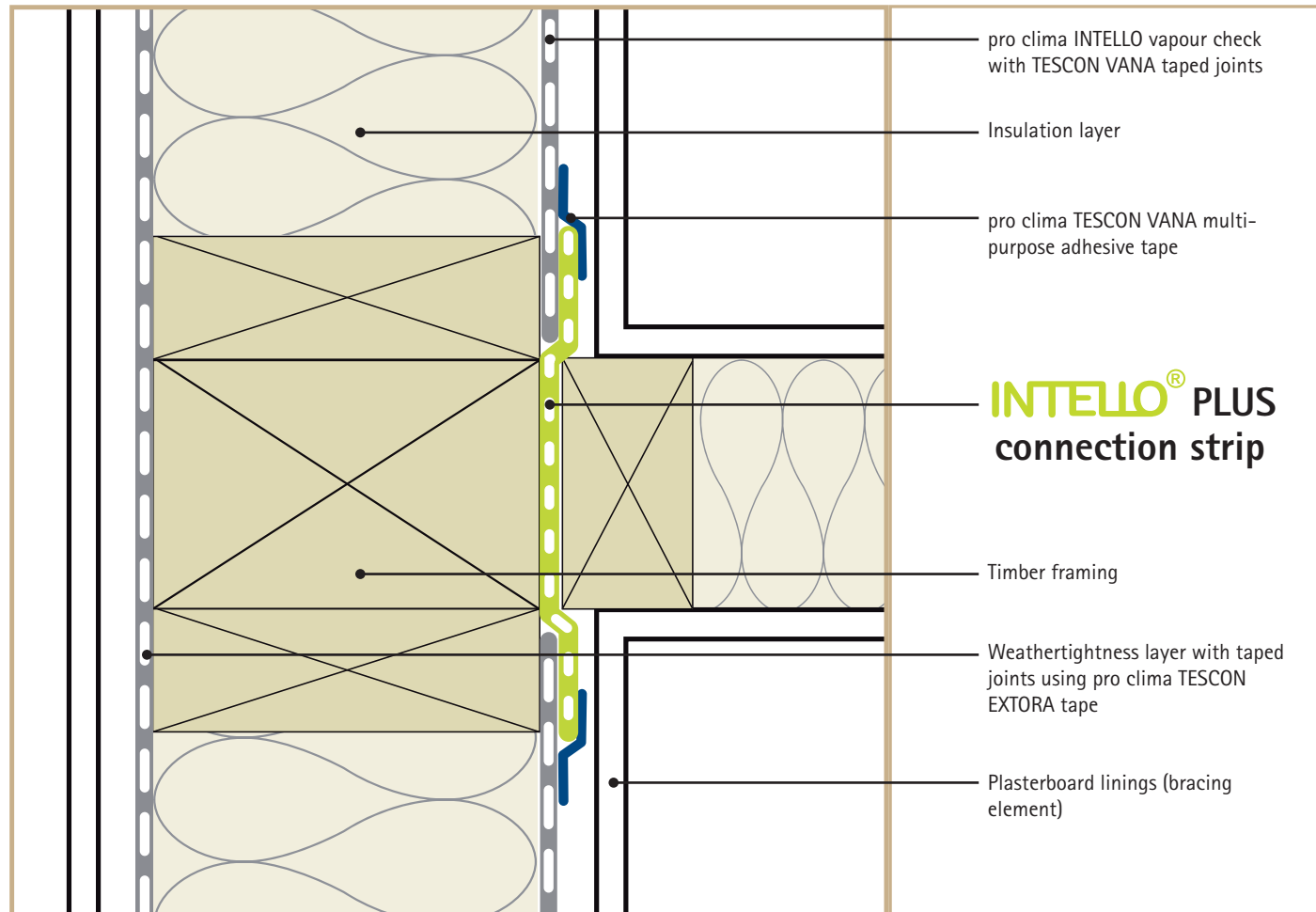
Fleece:	PP microfibre fleeces
Membrane:	polyethylene copolymer
Reinforcement:	PP
Surface weight:	110 g/m <sup>2</sup>
Temperature resistance:	-40°C to +80°C
μ:	37,500
Thickness :	0.20 mm
Colour:	white-transparent
MVTR-value mean/humidity variable:	37.5 / 1.25 > 50 MNs/g
Fire class:	E
Nail tear resistance:	350 N/5cm / 290 N/5cm
Tensile strength MD/XD:	15 % / 15 %
Nail tear-out resistance MD/XD:	240 N / 200 N
Durability:	passed

## Delivery Form:

ID code	EAN	LENGTH	WIDTH	PU/BOX	PU/PALLET
13315	4026639133151	50 m	300 mm	2	48

## APPLICATION

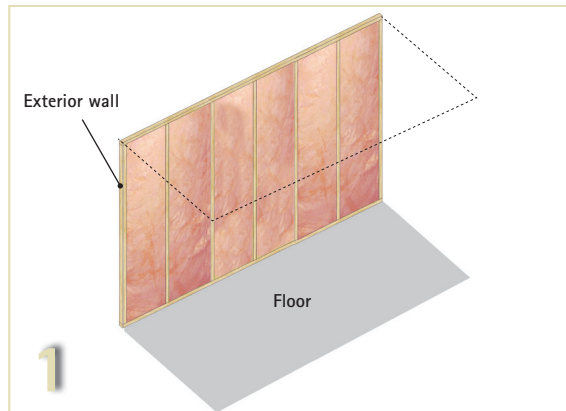
The connection strip is designed to connect the airtightness membranes at junctions between internal walls and external walls / ceiling for ease of the installation of the Intelligent Airtightness System (IAS). Please note that the connection strip should be installed at the same time as the internal framing.



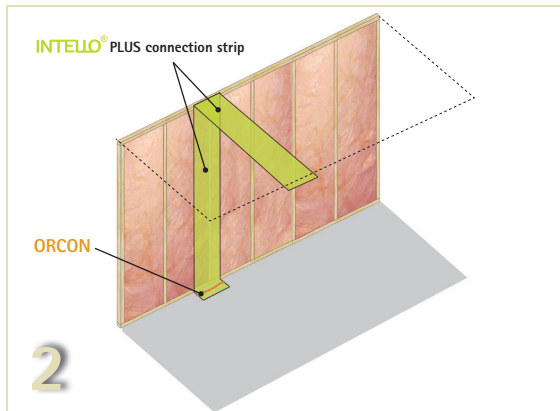
# INTELLO<sup>®</sup> PLUS connection strip

High-performance reinforced vapour check connection strip

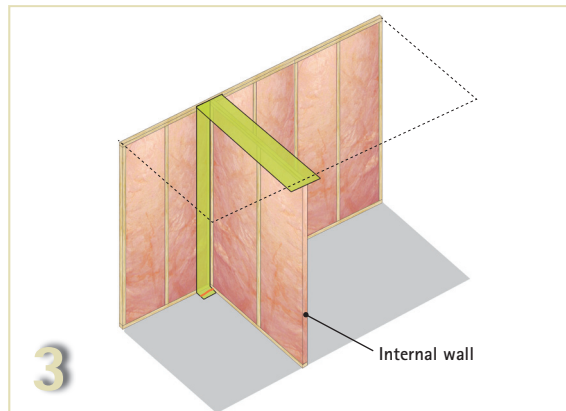
## INTELLIGENT AIRTIGHTNESS SYSTEM



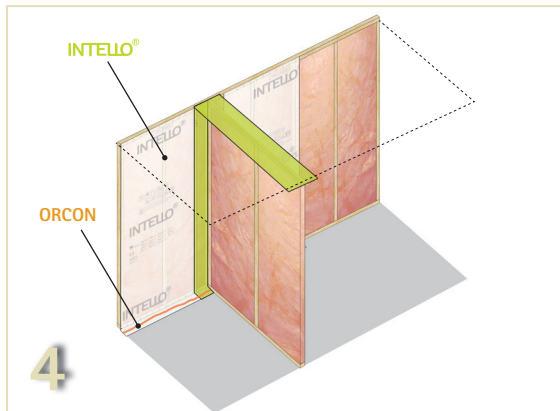
1  
All surfaces must be stable, dry, smooth and free of dust, silicon and grease. Sweep or vacuum clean and wipe all surfaces.



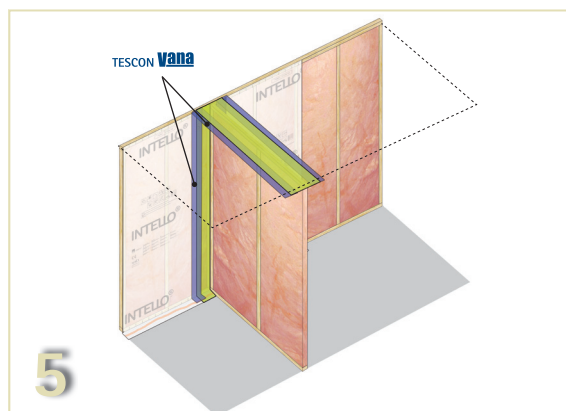
2  
Prior to erecting of the internal wall, fix the INTELLO PLUS connection strip to the junction where the internal wall meets the external wall using staples at 200 mm centres. Apply the pro clima ORCON multi-purpose joint adhesive to connect the INTELLO PLUS connection strip to the subfloor.



3  
Erect the internal wall allowing an even overhang of the INTELLO Plus connection strip on either side of the internal wall.



4  
Install the INTELLO membrane on the inside of the exterior wall and uppermost ceiling, where it meets the INTELLO PLUS connection strip allowing for an overlap of 20 - 30 mm.



5  
Once all of the INTELLO membrane is installed apply the TESCON VANA multi-purpose adhesive tape to the overlap between the INTELLO membrane and the INTELLO PLUS connection strip to form a continuous airtightness layer.

Further information about application and construction is given in the pro clima planning documentation.

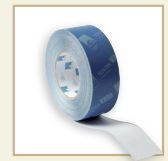
If you have any questions, please call our technical hotline 0800 PRO CLIMA.

Pro Clima NZ Limited  
PO Box 925  
Wellington 6140  
Phone: 04 385 4161  
Fax: 04 385 4162  
Email: [welcome@proclima.co.nz](mailto:welcome@proclima.co.nz)

## SYSTEM PRODUCTS



**INTELLO<sup>®</sup> /INTELLO<sup>®</sup> PLUS**  
Intelligent vapour check and airtightness membrane with humidity-variable diffusion resistance for active moisture management.



**TESCON VANA**  
Multi-purpose adhesive tape for sealing membrane overlaps and other components.



**ORCON**  
Multi-purpose joint adhesive in cartridge or tubular film. For joints to adjacent mineral or rough structural components.



**INSTAABOX**  
This box allows for airtight installation of light switches and power plugs for wall systems without service cavity.



**ROFLEX / KAFLEX**  
Sealing grommets for cables and pipes that penetrate through the INTELLO membrane layer.

[www.proclima.co.nz](http://www.proclima.co.nz)