

Pipe flashings through tiles

Pipe Penetrations shall be flashed with an EPDM or Silicon (higher durability) pipe flashing.

We mention butyl rubber however the supplied penetrations are not made from this material.

There are two types – EPDM with a Square based Aluminium Strip around the base and an EPDM seal fused into a sheet of soft Aluminium.

The suppliers of these provide guidance on the types of sealants however Gerard Roofs require that the sealant (neutral cure type) be compatible with an Aluminium Zinc substrate and the pipe penetration materials.

Square base pipe flashings should be installed in a Dimond shape, sealed and mechanically fastened to the tiles surface as shown in the details attached 10.4 Vents.

The EDPM Seal fused to Aluminium based are moulded to the shape of the tile ensuring that it is covered by the nose of the tile above and over the lower tile nose. Fasten the front edge with a tile fastener so that it cannot lift.



10.4 Vents

Measure and cut the tile when it intersects with a vent pipe as per **Figure 10.4.1** and **Figure 10.4.2**.

FIGURE 10.4.1

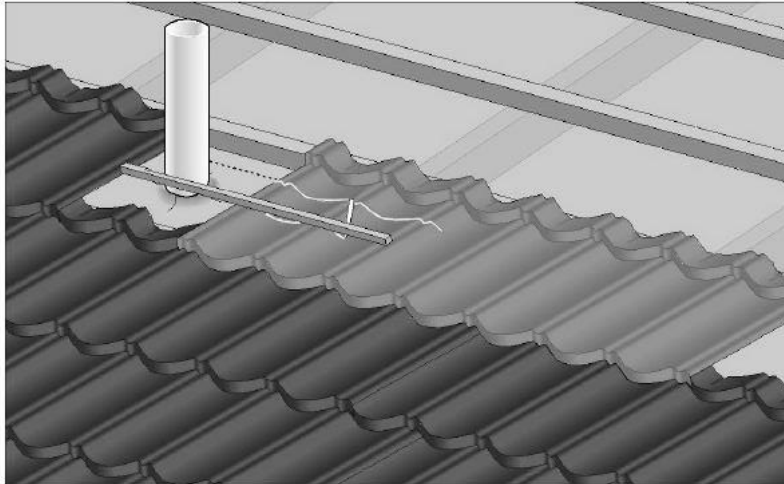


FIGURE 10.4.2

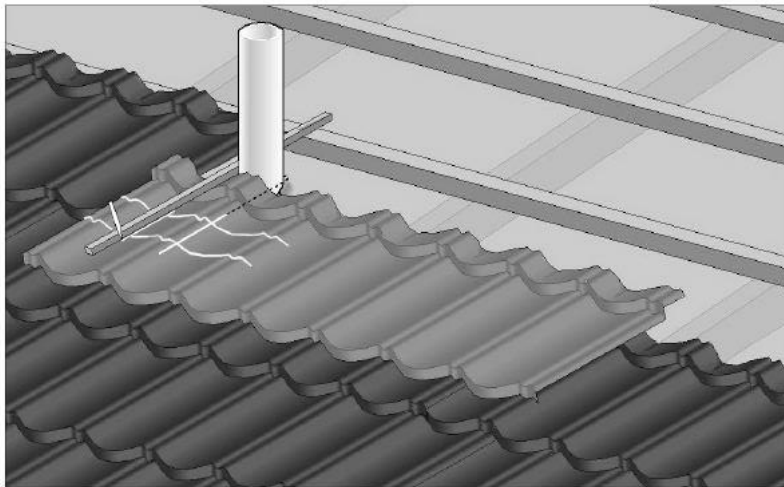


FIGURE 10.4.3

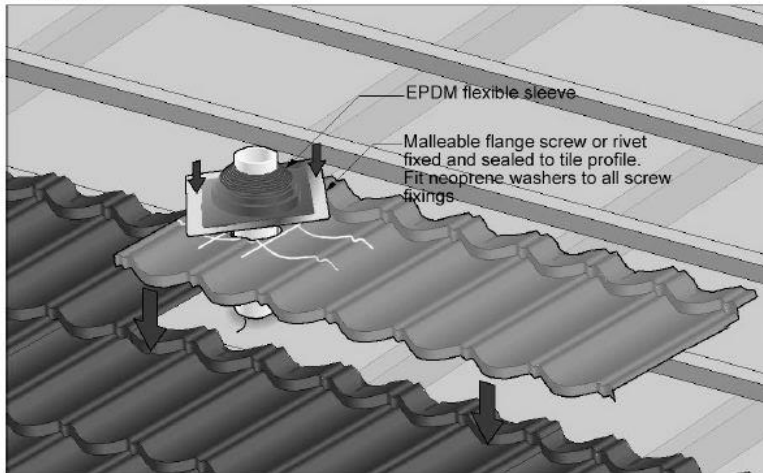
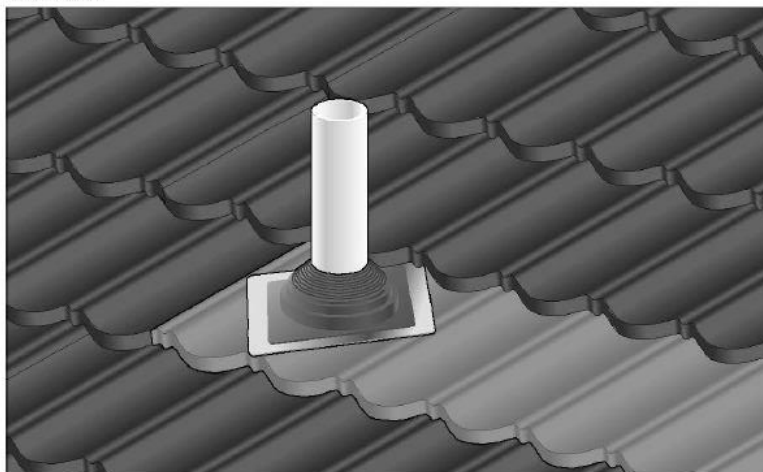


FIGURE 10.4.4



Pipe penetration shall be flashed using an EPDM aquaseal pipe flashing or a butyl rubber pipe flashing (for paint tiles) as shown in **Figure 10.4.3**

Hole cut out through the rib if possible and square base must be fixed diagonally to minimise holding of discharge water.