

TESCON **EXTOSEAL**

Sill Tape



One piece durable sealing



**For wall underlays like SOLITEX EXTASANA
and other weathertightness layers**

- ✓ One piece stretchable Sill Tape – no need for corner moulds
- ✓ Can be applied to damp surfaces – superior performance
- ✓ Very high adhesion on cold surfaces – no heating necessary
- ✓ Highly UV stabilised – suitable for NZ climate conditions
- ✓ Best performance – saving cost and time

Delivery Form:

ID code	EAN	LENGTH	WIDTH	PU/BOX	PU/PALLET
14152	4026639133151	20 m	150 mm	2	60
13315	4026639141569	20 m	200 mm	2	42

APPLICATION GUIDE

TESCON EXTOSEAL

Sill Tape

Please note: When the TESCON EXTOSEAL Sill Tape is used in conjunction with LOSP (light organic solvent preservative) treated timber, the solvent from the timber treatment must be allowed to evaporate (generally at least one week) prior to the installation of the system.

Pre-installation measurement



1

Measure vertically up the jamb from the internal corner of the sill. Minimum 100 mm allowing for 50 mm cover onto the wall underlay.

Cut Sill Tape to length



2

Cut TESCON EXTOSEAL to appropriate length (sill length plus required jamb height on either side).

Installation to framing



3

Remove first release foil to allow for application onto sill and jamb framing. Start installing the Sill Tape from the first pre-installation measurement of the first jamb. Follow the sill and up the second jamb. Ensure you apply the Sill Tape tightly into the corner and smoothly along the sill frame using the pro clima PRESSFIX.

Installation to weathertightness layer



4

Remove second release foil to allow for application onto weathertightness layer. Fold and stretch to the face of the weathertightness layer. Ensure you apply the Sill Tape smoothly using the pro clima PRESSFIX.

Jamb / Head installation



5

Measure vertically down the jamb and horizontally across the head trimmer from the internal corner. Minimum 100 mm allowing for 50 mm cover onto the weathertightness layer. Repeat installation to jamb and head trimmer as per steps 3 and 4.

Foil tape: wet-seal applications

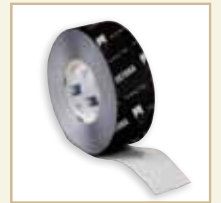


For wet-seal applications please refer to the the TESCON ADHISO WS Application Guide.

SYSTEM PRODUCTS



SOLITEX EXTASANA
CodeMark certified high performance wall underlay designed for New Zealand to be used behind most typical cladding systems.



TESCON EXTORA
Multi-purpose adhesive tape for weathertight sealing of wall and roof underlays and other weathertightness layers.



ORCON
Multi-purpose liquid adhesive for connections to rough adjoining structural components or mineral surfaces.



Weathertight sealing grommets for cables and pipes that penetrate the weathertightness layer.

www.proclima.co.nz

Pro Clima NZ Limited • PO Box 925 • Wellington 6140 • Phone: 04 589 8460 • Fax: 04 589 8461
Email: welcme@proclima.co.nz

