



FIRTH KEYSTONE® COMPAC IV STRUCTURAL RETAINING WALL SYSTEM

- **RESIDENTIAL**
- **COMMERCIAL**
- **INFRASTRUCTURE**

HIGH PERFORMANCE RETAINING

Firth is proud to bring you Firth Keystone Compac IV. This cutting edge retaining wall system offers large, engineered projects the very best in structural performance. However it is also ideal for domestic landscaping projects not exceeding 1.2m in height.



THE KEYSTONE® RETAINING WALL SYSTEM

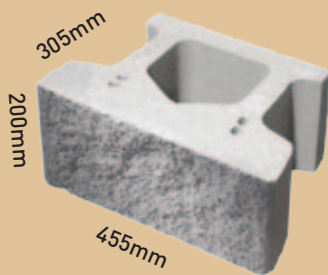
For over two decades Keystone Retaining Wall Systems have set the bar for excellence, innovation, and technology within the retaining wall industry. Keystone is the global benchmark in soil retention, erosion control and landscape systems. Holding over 50 patents, it symbolises the very best in design and structural performance.

And now Firth is proud to bring you Keystone Compac IV, a cutting edge retaining wall system. The Firth Keystone Compac IV offers outstanding structural performance in a space-saving design, perfect for tighter radius curves and corners. The unit's lighter weight and shorter tail design ensure it is easier to handle, making it an installer's favourite.

Firth Keystone® Compac IV Range

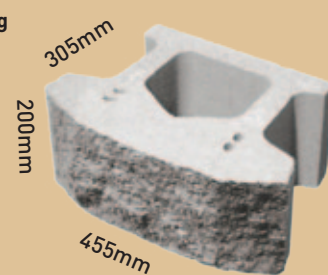
Straight-Face

Weight: 34kg



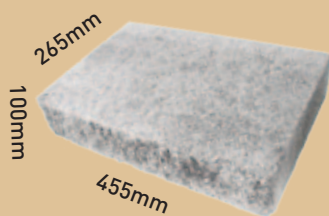
Tri-Face

Weight: 33kg



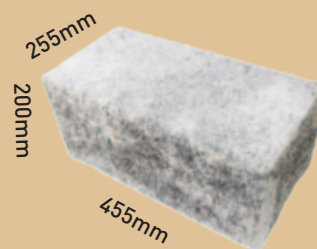
Capping Unit

Weight: 26kg



Corner Block

Weight: 45kg

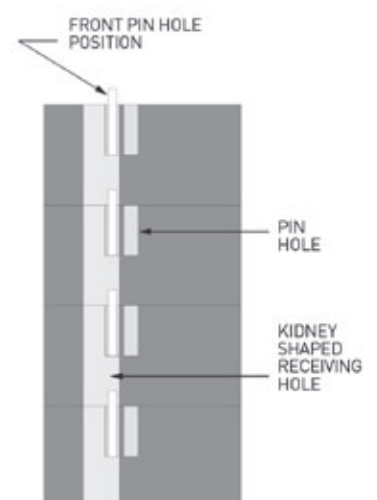
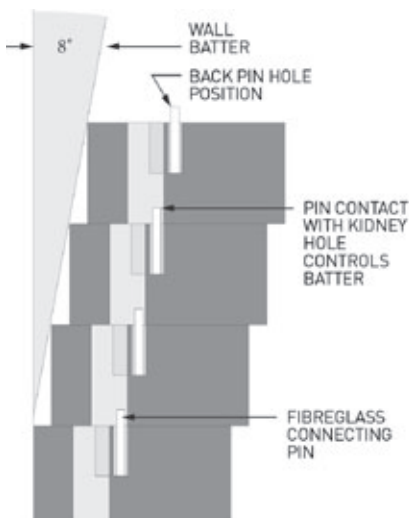


Fibreglass Pin



2 pins per block.
Order separately.

Fibreglass Pin Positions



Keystone Compac IV provides proven performance with many benefits that will assist in the design and construction process. From backyard landscaping to large, load-bearing reinforced structures, Keystone Compac IV products are ideally suited for any application.

KEY FEATURES

Fibreglass Pin Connection System and Geogrid System

- Pin connection system allows for improved connection strength between unit, geogrid and accurate alignment of each row/unit.

Structural Integrity

- Large, open core design provides increased gravel interlock across block interfaces.
- Significant increased vertical drainage through units.
- High unit-to-unit shear resistance.

Ease of Installation

- Tapered sides offer ease in constructing radii.
- Unit's wide stance and 'tail' element makes handling easier.
- The large core area allows for rapid filling of drainage material.
- 11 units per m²

Aesthetics

- Tri-Face and Straight-Face options
- Available in a split face texture.
- Other colours available on request check with your local Firth contact.

Design Versatility

- Near vertical or two setback options available.

Colours Available



Sandstone



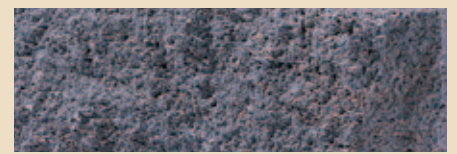
Granite (Made to Order)



Rockface

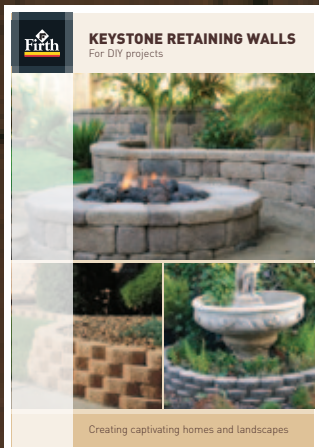
Other colours available on request.
Check for minimum run quantities.

Finishes Available



Split-Face





CONCRETE AND MASONRY PRODUCTS: A SUSTAINABLE BUILDING OPTION AND SOLUTION

- Manufacturing plants operating in compliance with relevant legislation
- All products manufactured according to ISO9001
- Strong focus on reducing transport impacts
- Masonry products manufactured according to Lean principles
- Greenstar and environmental product options available
- Environmental Management Plans operative at all sites
- Effective acoustic barrier and fire resistant
- Longer and effective building life
- Demolished concrete can be recycled, reused or as clean fill
- Passive solar heated thermal mass provides energy efficiencies
- Highly durable, low maintenance
- Rainwater and process water reused in most products

For more on Firth's contribution to building a sustainable tomorrow today, visit www.firth.co.nz or call us on 0800 800 576.



Available in

PRODUCTSPEC

www.productspec.net

0800 800 576
www.firth.co.nz

Available in

masterspec

www.masterspec.co.nz