

Multi-LIGHTZ



SL41-EL

316 Stainless Steel Matt



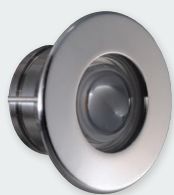
SL41-EL
Eyelid

316 Stainless Steel
Black



SL41-EL
Eyelid

316 Stainless Steel
White



SL41
Beam 70°

316 Stainless Steel



SL41
Beam 90°

316 Stainless Steel
Matt

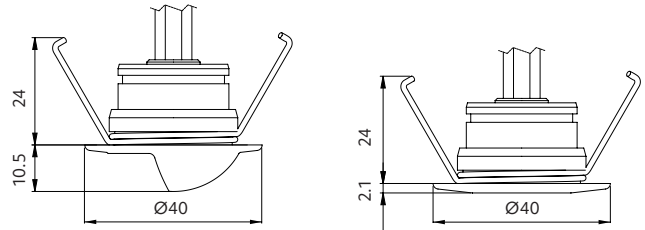


SL41
Beam 90°

316 Stainless Steel
White

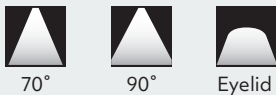
Multi-LIGHTZ

- + constant voltage
- + over voltage protection
- + use outdoors for step / path / deck lighting
- + use indoors for stairs / hallways
- + 316 stainless steel
- + IP67



Beam control options

Beam angle



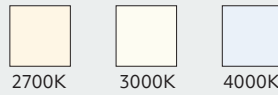
70°

90°

Eyelid

CCT options

CCT



2700K

3000K

4000K

CRI

CRI 80

Other options

Trim colour



316
Stainless
Steel

316
Stainless
Steel Matt

316
Stainless
Steel Black

316
Stainless
Steel
White

Power supply – constant voltage

(ordered separately)

Q4-12V-20W (IP20) 1-11 lights in parallel

SLDV-12V-40W (IP67) 1-21 lights in parallel

SLDV-12V-75W (IP67) 1-45 lights in parallel

Higher output power supplies available

Please refer online for cable size requirements
(voltage drop)

Product information

(example: 2700K)

Power supply (VDC)	Luminaire power (W)	Delivered lumens (lm)	Insulation coverable		
			NZ	AU	UK/EU
12	1.6 (130mA)	100	IC-F	IC-4	✓



Size
40x40mm



Cut-out
Ø32mm



Hole depth
>40mm



IP67

how to specify Multi-LIGHTZ

Please confirm model option availability from our website. **Note: driver is ordered separately.**

e.g. code = **SL41-70-27-SS**

Model	Beam	CCT	Trim Colour	Market
SL41	70 = 70° 90 = 90° EL = Eyelid	27 = 2700K 30 = 3000K 40 = 4000K	SS = 316 Stainless steel MS = 316 Stainless steel matt B = 316 Stainless steel black W = 316 Stainless steel white	■ = NZ 1 = Aust 2 = UK 3 = EU

Please see www.switch-lighting.co.nz for full specifications, lux levels, SDoCs, ies files and installation instructions.



Warranty
5 Years

L70 (50,000 h)

