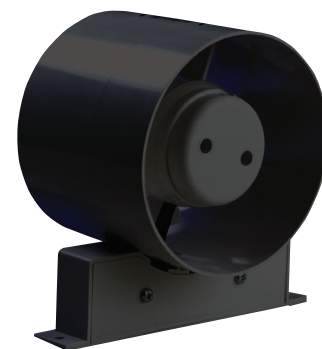


# MANROSE CLASSIC INLINE AXIAL FANS

## ID MODELS

Duct Size	Model	Switching	Performance	Order Code
100mm	ID100S	Standard	23 l/s, 85m <sup>3</sup> /hr	FAN0012
100mm	ID100T	Timer	23 l/s, 85m <sup>3</sup> /hr	FAN0013
125mm	ID125S	Standard	36 l/s, 130m <sup>3</sup> /hr	FAN0060
125mm	ID125T	Timer	36 l/s, 130m <sup>3</sup> /hr	FAN0061
150mm	ID150S	Standard	87 l/s, 313m <sup>3</sup> /hr	FAN0090
150mm	ID150T	Timer	87 l/s, 313m <sup>3</sup> /hr	FAN0091
230mm	ID230S	Standard	152 l/s, 550m <sup>3</sup> /hr	FAN0405
230mm	ID230T	Timer	152 l/s, 550m <sup>3</sup> /hr	FAN0406



ID100/125/150

- With the fan mounted in the ceiling space, these inline models are able to draw steam directly from the source.
- These axial fans have ball bearing motors to prolong the life of the motor.
- Supported by a 5 year warranty.

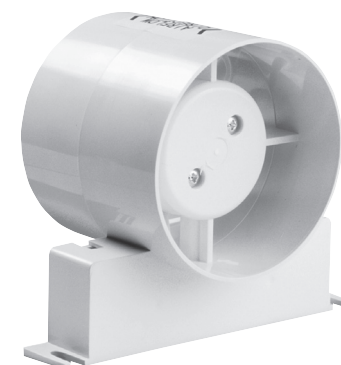
## ECO INLINE AXIAL FANS

Duct Size	Model	Switching	Performance	Order Code
150mm	ECO150S	Standard	64 l/s, 230m <sup>3</sup> /hr	FAN2078



ID230

- With the fan mounted in the ceiling space, these inline models are able to draw steam directly from the source.
- High quality sleeve bearing motor.
- Supported by a 2 year warranty.



ECO150S

### Switching Options

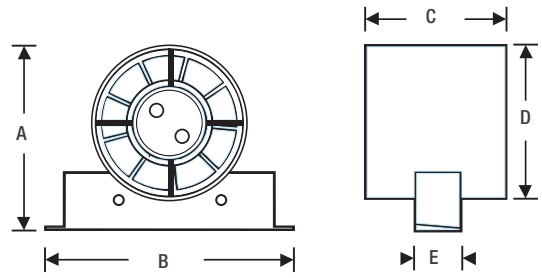
1. Standard - Operates from remote switch (not supplied).
2. Timer - Fan operates from a switch and continues to run for a preset time after switching off - adjustable 1-20 minutes.

Requires three wires: permanent phase, switched phase, neutral.

**NOTE: All fan flow rates quoted are free air delivery.**

## DIMENSIONS SPECIFICATION (MM)

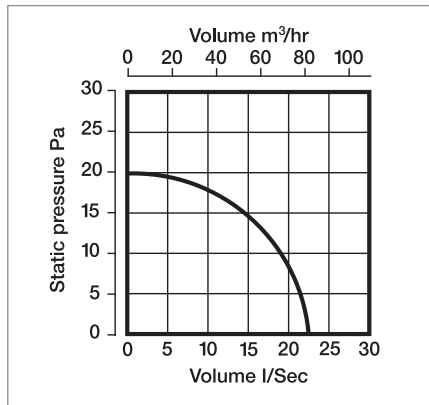
Model	A	B	C	D	E
ID100	130	155	90	100	27
ID125	150	155	99	118	27
ECO150 (white)	187	153	109	150	27
ID150	187	153	109	150	27
ID230 (square model)	286	286	155	230	-



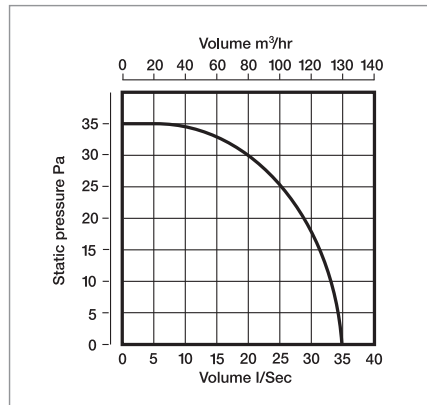
Dimensions - ID Fans

## TECHNICAL SPECIFICATION & PERFORMANCE DATA

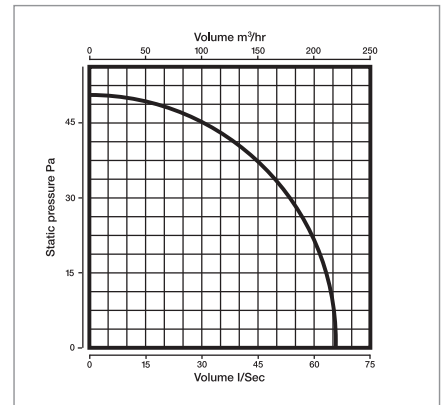
Model	ID100	ID125	ECO150	ID150	ID230
Power	220 - 240V	220 - 240V	220 - 240V	220 - 240V	220 - 240V
Fan Performance	23 l/s, 85m <sup>3</sup> /hr	36 l/s, 130m <sup>3</sup> /hr	64 l/s, 230m <sup>3</sup> /hr	87 l/s, 313m <sup>3</sup> /hr	152 l/s, 550m <sup>3</sup> /hr
Fan Wattage	20W	20W	25W	25W	80W
Maximum Pressure	20 Pa	35 Pa	50 Pa	60 Pa	50 Pa
Fan Speed	2400 RPM	2000 RPM	2400 RPM	2400 RPM	1250 RPM
Sound Level	41 dB(A)	41 dB(A)	40 dB(A)	40 dB(A)	50 dB(A)
Max. Operating Temp	50°C	50°C	50°C	50°C	50°C
IP Rating	IPX4	IPX4	IPX4	IPX4	IPX4



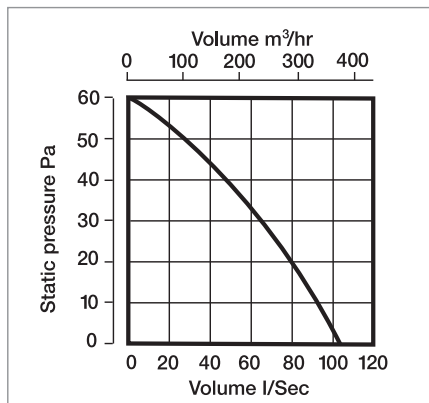
Performance - ID100



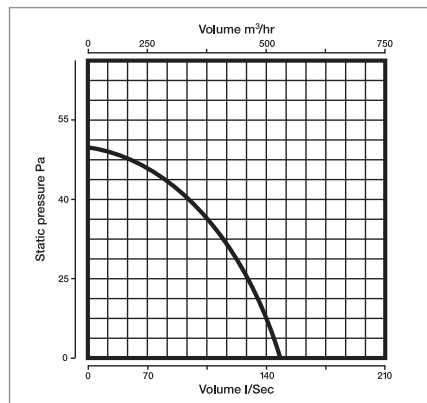
Performance - ID125



Performance - ECO150



Performance - ID150



Performance - ID230

Note: PERFORMANCE - ID Fans maximum fan performance stated, this can vary depending on the length of ducting used.