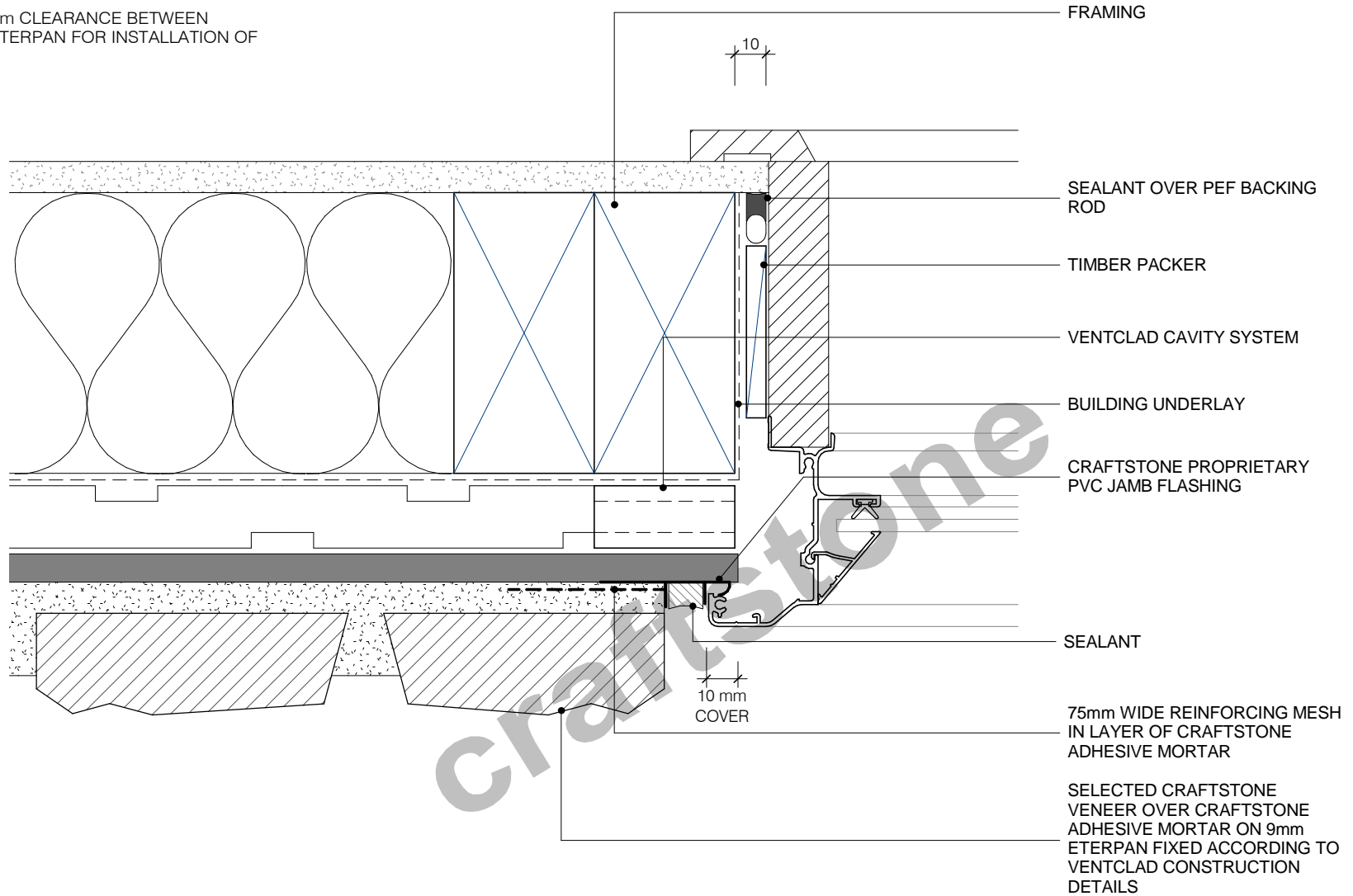


NOTE: ALLOW 3-5mm CLEARANCE BETWEEN JOINERY FIN AND ETERPAN FOR INSTALLATION OF FLASHING



WWW.CRAFTSTONE.CO.NZ



ALTERNATIVE JAMB DETAIL - MECHANICAL FLASHING - FLUSH MOUNT

C3
SHEET

1 : 2 @ A4
SCALE

08/12/11
ISSUED

COPYRIGHT CRAFTSTONE NEW ZEALAND LIMITED
CRAFTSTONE NEW ZEALAND ACCEPTS NO LIABILITY FOR DRAWINGS SUBMITTED TO COUNCIL

6C PIERMARK DRIVE, ALBANY, AUCKLAND, NEW ZEALAND - P: 09 447 3918 F: 09 447 3919
P.O. BOX 302-613 NORTH HARBOUR 0751, AUCKLAND, NEW ZEALAND