



**Thermakraft™**  
ONE WRAP  
SYSTEM

10 Products - One system  
One warranty



## Installation Guide

# ALUBAND

### **Bituminous adhesive flexible window flashing tape.**

Aluband is designed specifically as a premium window flashing tape and forms part of the Thermakraft One Wrap System. Made with a heavy bituminous adhesive, the product provides high strength bond and excellent abrasion resistance.

#### **Product usage**

Aluband Window Flashing Tape is installed into and around frame joinery opening over the wall underlay and exposed frame to cover both the face and edge of the opening framing as a secondary weather resistant barrier. It can also be installed at joinery heads to seal flashing upstands to the wall underlay.

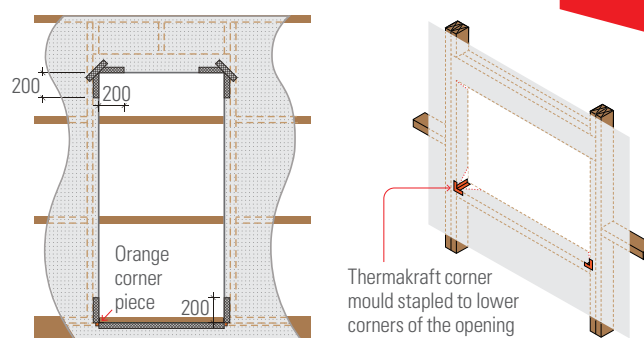
Smarter products. Better buildings.  
**thermakraft.co.nz**



# Installation Guide

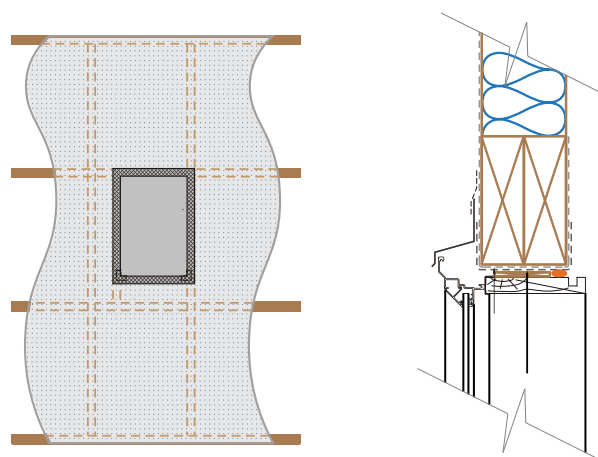
## Application Method

- Cut the wall underlay/air barrier at a 45° angle away from each corner. Fold flaps tightly into the window or door opening and fix with staples on the back faces of the framing.
- Fix the Thermakraft Corner Moulded Piece to the bottom corners by way of staples or clouts to the two jambs. Always ensure that Aluband is applied to surfaces that are clean and free of dust, contaminants, solvents, oils or waxes. Note the following: 150mm wide tape is used for 100mm wide window or door framing, and the 200mm wide tape is used for 140mm to 150mm wide reveals. (With steel framed houses use Double Sided Tape to attach the Thermakraft Aluband Corner Moulded Piece to metal framing).
- Measure 200mm up both jambs, add 400mm to the length of the window sill and cut to suit that measurement.
- First remove the release film from the tape; align the back edge of the tape with the inside edge of the sill.
- Using the Thermakraft Tool, firmly press the tape onto the wall underlay to ensure good adhesion and ensure the tape is fitted tightly into the jamb to sill corners.
- At the sill/jamb corners cut the tape from the external edge of the frame outwards. Fold flaps back onto the wall underlay/air barrier and press tape firmly for good adhesion.
- Proceed to fit the Window Flashing Tape to the top corners of the frame (200mm across lintel x 200mm down jamb).
- For window or door lintel to jamb junction, apply a butterfly using the 75mm wide x 100mm long Aluband. Fix at a 45° angle to the jamb with an overlap at the corner of 3mm.
- Door frames are to be treated similarly to window openings. The sill may be either a timber or a concrete floor.
- Window Flashing Tape is used to seal the up stand of the window head flashing to the building underlay. (Refer to the cladding manufacturer's details).
- Aluband must NOT be left exposed to the weather or UV for more than 42 days.



## Window and door frames

- Staple orange corner piece to the bottom corner sill. Place tape 200mm up the jambs and across the full width of the sill opening. Align tape with the back of the frame opening.
- At the top corner place tape 200mm down the jamb and 200mm across the lintel. Place a strip of 75mm tape across the top corner.



## Application Tips

- Always use the Thermakraft Aluband Window Flashing Tool to apply firm pressure onto the tape during installation. This will ensure proper adhesion of the tape to the building underlay or other substrates.
- Install the Aluband Window Flashing above 5°C.
- Unaffected by LOSP or other solvent based treated timber. However, LOSP or other solvent based treated timber must have sufficient time for the solvent chemical to flash off in a well ventilated area. Recommended minimum 7 days.

## Important Information

To assist the adhesion of Aluband window flashing tape, Thermakraft suggests the following two options this is particularly relevant in the following conditions:

- In temperatures below 5°C.
- When adhering to difficult to bond substrates such as rough/uneven surfaces.
- When the tape has been lifted or moved after initial application.

# Installation Guide

## Application of Heat:

- Press the window sill tape into position in the usual manner.
- Apply a gentle heat, using a heat gun on low heat to the top of the window sill tape.
- Once the adhesive starts to soften use the Thermakraft tool or a roller to firmly press the tape into the wall underlay ensuring good adhesion.
- Take care not to damage the foil face lining.

## Difficult to Bond Substrates Surface Preparation:

- Always ensure that Aluband is applied to surfaces that are clean and free of dust, contaminants, solvents, oils or waxes.
- Application of Scotch® Super 77™ Spray Adhesive: When installing Aluband Flashing Tapes on difficult to bond substrates, Scotch® Super 77™ Spray Adhesive may be used. Ensure that the substrate is dry and free of dirt before applying the spray adhesive. Apply a light spray/coating of the spray adhesive onto the substrate. Wait for a minute to allow the spray adhesive to become tacky. When tacky to the touch apply the flashing tape in the normal manner.

## Adhesives and Sealants:

- After the installation of Aluband window flashing tape, ensure that the edges do NOT come into contact with solvent based sealants or adhesives. Solvents in these products can adversely affect the adhesion or dissolve the bituminous adhesive and cause it to run.
- If the application of solvent based adhesives or sealants are necessary, cover the edges with Thermakraft joining tape or a true aluminium foil tape to form a barrier. With a true aluminium foil tape, the installer must test the bonding strength.
- The installer must check the compatibility of the Aluband window flashing tape with the sealant or adhesive product to ensure the components are fully compatible.

## Handling and Storage

Aluband window flashing tape must be handled with care to prevent damage such as tearing, excessive puncture and roll deformation.

The product must be stored under cover well away from direct moisture, rainfall contact and sunlight (UV). Care should be taken not stack other materials on top of the product.