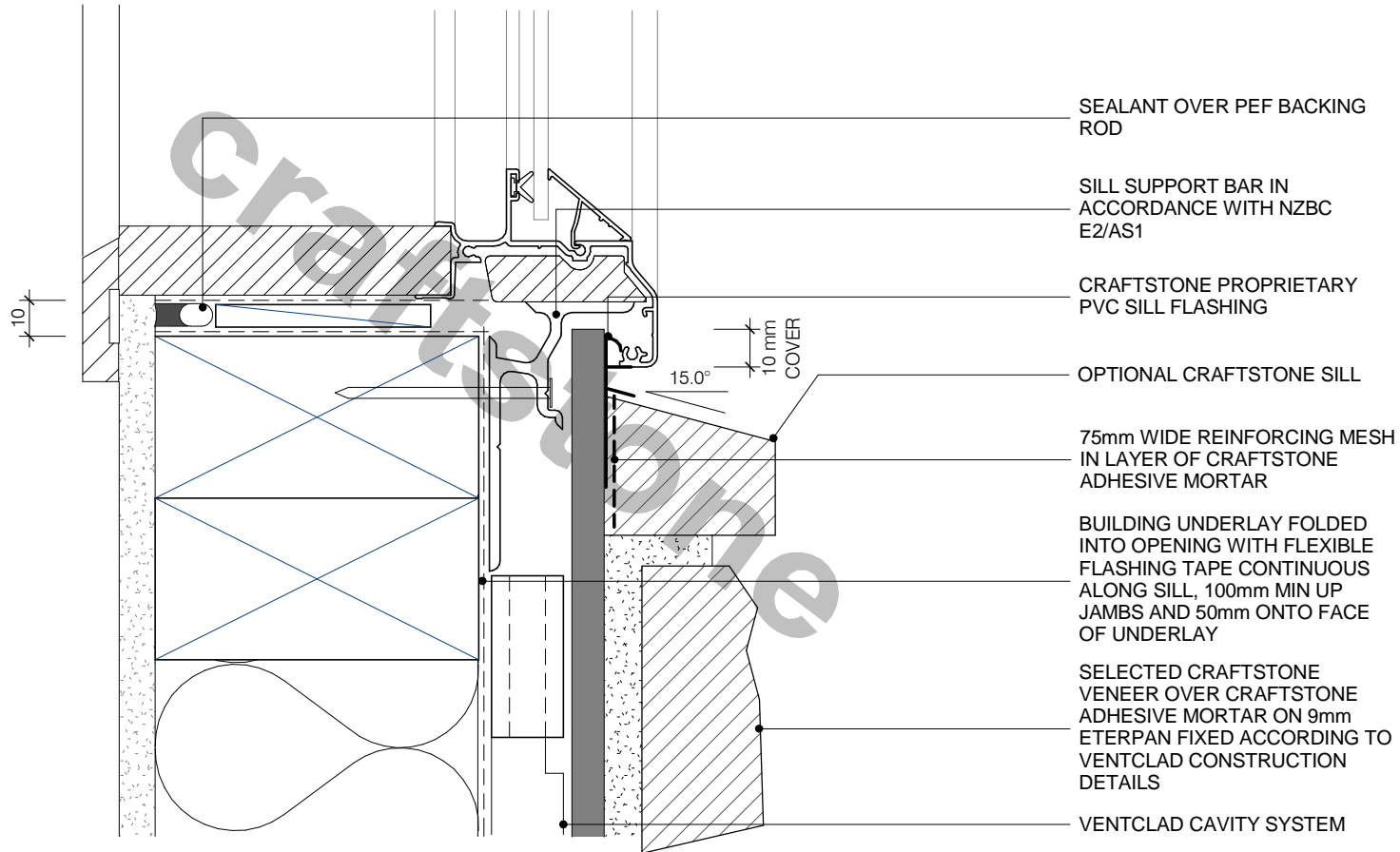


NOTE: ALLOW 3-5mm CLEARANCE BETWEEN JOINERY FIN AND ETERPAN FOR INSTALLATION OF FLASHING



[WWW.CRAFTSTONE.CO.NZ](http://WWW.CRAFTSTONE.CO.NZ)



**ALTERNATIVE SILL DETAIL - MECHANICAL FLASHING - FLUSH MOUNT**

<b>C6</b> SHEET	1 : 2 @ A4 SCALE	08/12/11 ISSUED	COPYRIGHT CRAFTSTONE NEW ZEALAND LIMITED CRAFTSTONE NEW ZEALAND ACCEPTS NO LIABILITY FOR DRAWINGS SUBMITTED TO COUNCIL	6C PIERMARK DRIVE, ALBANY, AUCKLAND, NEW ZEALAND - P: 09 447 3918 F: 09 447 3919 P.O. BOX 302-613 NORTH HARBOUR 0751, AUCKLAND, NEW ZEALAND
--------------------	---------------------	--------------------	---	--