

Tilt Slab and Off Form Concrete Texturing

Specification

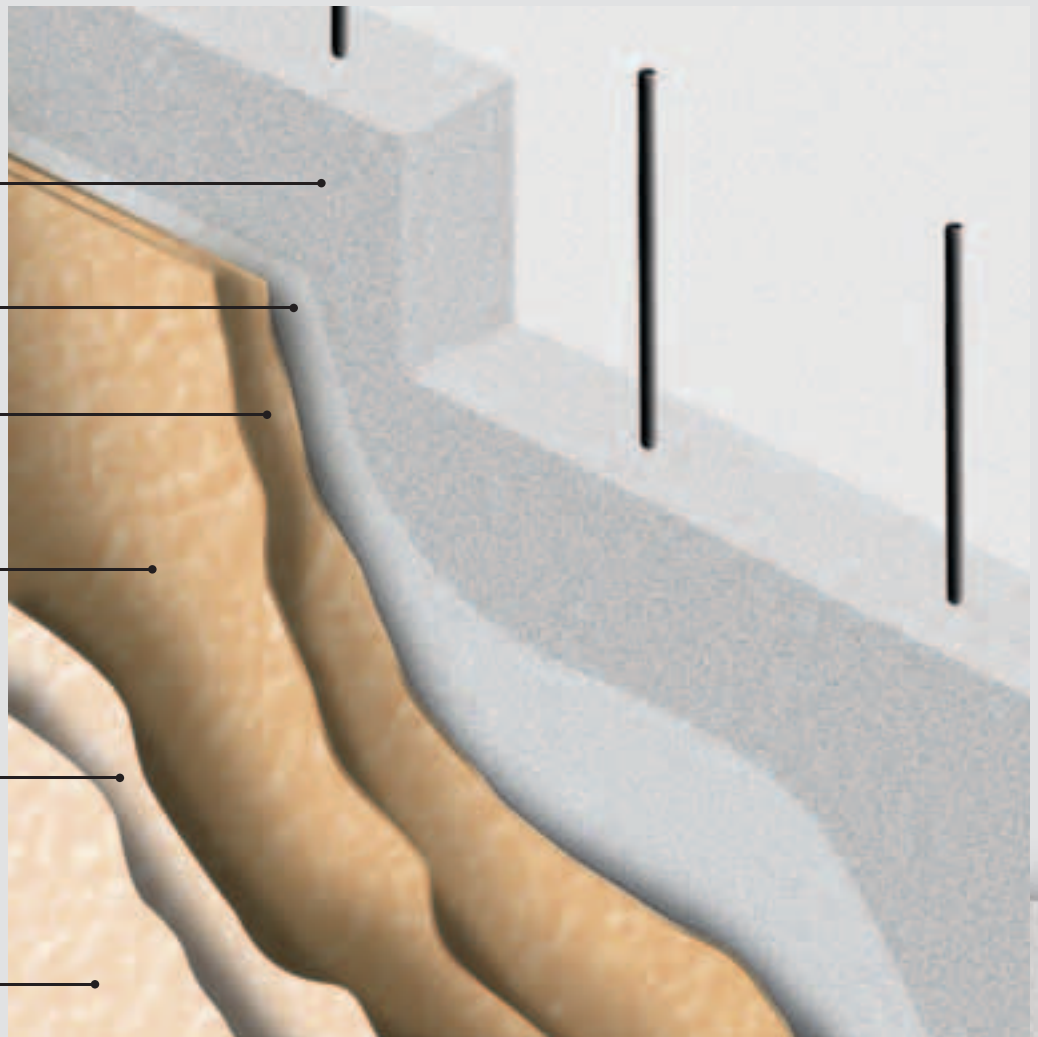
Tilt slab and off form concrete

Product Guarantee Period 7 years from date of practical completion

Workmanship Guarantee Period 5 years from date of practical completion

System Construction

- Tilt slab or off form concrete
- Solvent sealer
- Levelling coat
- Selected texture from the Plaster Systems Ltd range
- 1st coat Insulcote 100% acrylic paint system (in specified colour)
- 2nd coat Insulcote 100% acrylic paint system (in specified colour)



What is Concrete construction Texturing?

Tilt Slab is a method of forming solid concrete walls that are stood up and fixed on site to form the structure of a home or commercial building. The installer fills large defects and bolt holes fixing points etc. usually with detailing plaster.

Off form concrete construction describes building elements that have been laid on site using boxing to form shape.

This sheet details the subsequent texturing to produce an attractive textured finish.

Advantages

- Concrete construction
- Attractive monolithic textured finish
- Low maintenance coating

Application

Substrate

Concrete should be fully cured and dry.

Preparation

Surfaces should be clean and dry free from dirt moss mould. Dags and proud areas should be rubbed off with a grinding stone. The surface can then be coated with a coat of dilute Solvent sealer to control suction on the surface during subsequent plaster application.

Filling

Voids or hollows and minor defects can then be filled with Multiplast all purpose plaster. Where required these filled areas can be sanded the next day but it is preferable to fill level as the plaster will be hard and difficult to sand.

Levelling Coat

A leveling coat is then applied appropriate to the subsequent texture, for instance a tight coat of ezytex Sponge is applied prior to application of ezytex, or formstone coatings and prior to the application of Adobeplast if a light adobe texture is desired.

Texturing

The desired texture from the Plaster systems range can now be applied. Options are Ezytex, Adobeplast and Formstone which are painted over with two coats of Insulcote paint.

Painting

Paint in accordance with the chosen texture specification. Insulcote paint is recommended, plaster requires 2 – 3 days curing before application of the Insulcote paint. Walls should be dry when painted.

Special Notes

This system will provide weatherproofing to the wall surfaces when properly painted however it is the responsibility of the designer and builder to provide and install adequate detailing for penetrations and tops, refer to the designers of the concrete construction for these details.

Movement control joints must not be plastered over as they will crack, the sealant line should be brought out flush with the finished texture level.

Do not apply any coatings or render products to tilt slab or off form concrete until checks have been made to see if there are release agents present on this substrate. If release agents are present refer to the release agents manufacturers data sheet for its removal or treatment prior to coatings or renders being applied.