

# BGC

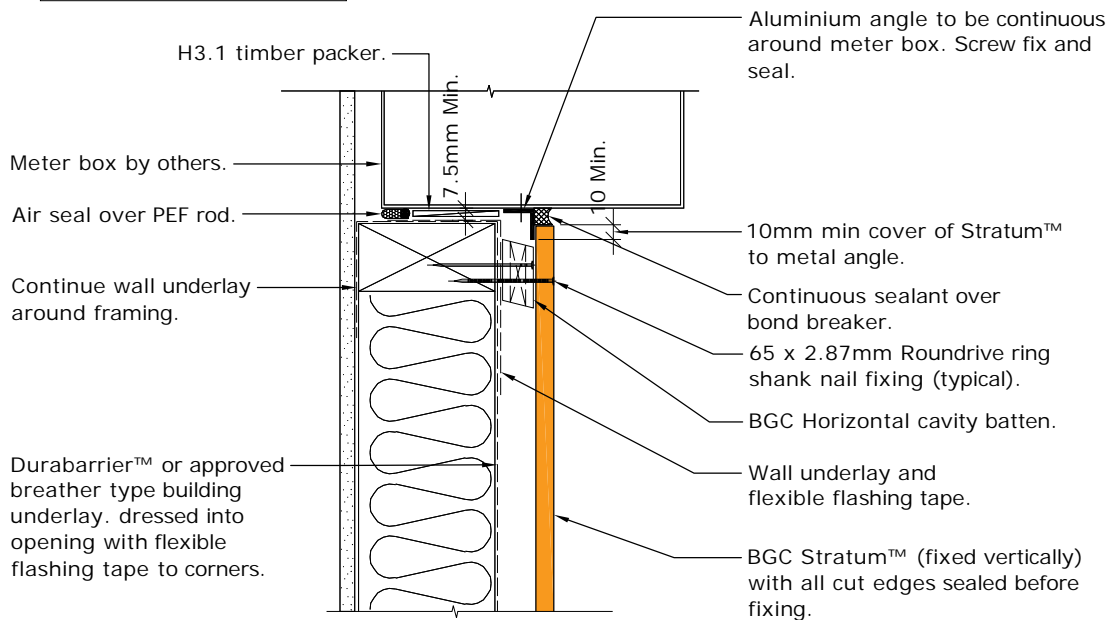
# Fibre Cement

**Cavity Batten Note:**

Refer to cavity batten layout for batten sizes, types, spacing's & fixings

**Cladding fixing note:**

Refer to cladding fixing layout for all fixing types & spacing's



Note. Where Durabarrier™ is used flashing tape must be applied to the entire opening

PROFILE **BGC Stratum™ and Stratum™ Duo**  
(Vertical Installation)  
DETAIL **Meter Box Sill Detail**  
**Cavity Construction**

DATE **May 2019**  
SCALE **1:5 @ A4**  
DETAIL NO. **SV-18**