



# DB1C Kit

## Wi-Fi Video Doorbell Kit

Complete security solution for your doorstep protection.

The DB1C kit comes with a Wi-Fi video doorbell, a chime, and a standard transformer in the package. Together they provide you with a full set of solution to improve your home security.





**FHD**

1080p



170° Vertical Field of View



AI-Powered Person Detection



2.4 GHz & 5 GHz Dual Band Wi-Fi



Two-Way Talk



Night Vision up to 5 m (16 ft.)

**H.265**

H.265 Video Compression



IP65 Dust and Water Protection



Supports MicroSD Card up to 256 GB



Multiple Notification Ringtones



EU/UK Standard Plug



Built-in Siren



Dual Antennas, Supports 2.4 GHz Wi-Fi



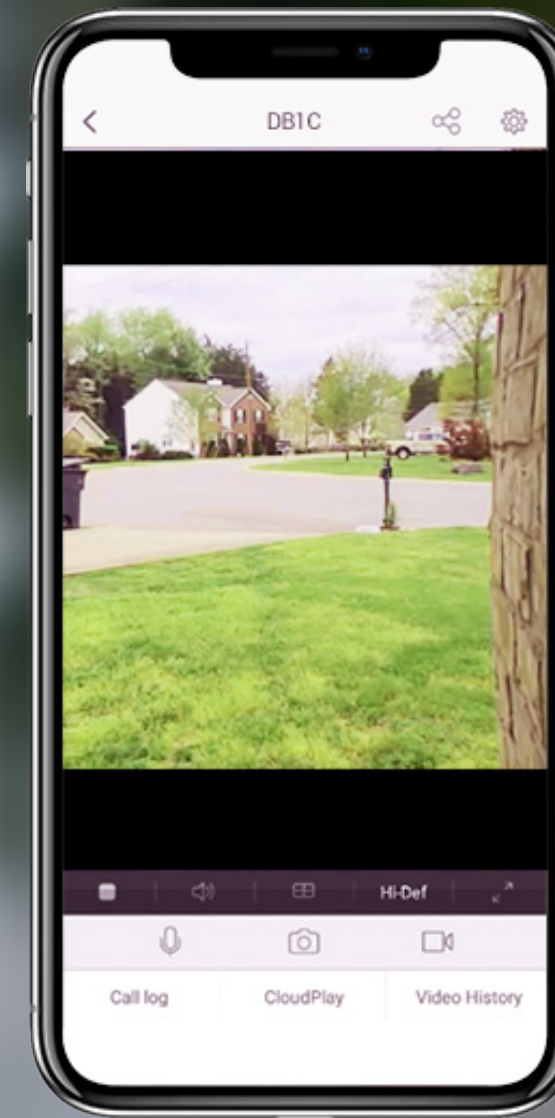
Rated input voltage: 230V AC  
Rated output voltage: 8,12,24V



## See every detail you need to see.

---

The DB1C delivers 1080p video, bringing the rich precision and extraordinary images you would expect from EZVIZ.



## AI-powered person detection.

---

With its AI algorithm onboard, the DB1C intelligently detects a person's movement, ensuring that you only receive notifications when people move by. You can turn off this function if you need other motion alerts such as those triggered by animals or cars.





## Covers every inch, from head to toe.

---

Featuring a 170-degree vertical view, the DB1C reliably records everything you need to see. Even a package on the ground will be clearly captured.



## Two-way talk.

---

When the EZVIZ App notifies you of a visitor at the front door, you can see and talk to the person right away, and from wherever you are.





# Dual-band Wi-Fi connectivity.

Not all video doorbells support dual-band connectivity. The DB1C does, and it gives you the flexibility to choose between 2.4 or 5 GHz connections for optimal performance on your network.



# H.265 video technology.

The DB1C doorbell features the advanced H.265 video compression technology, achieving better video quality with only half the bandwidth and half the storage space of the previous video compression standard (H.264).



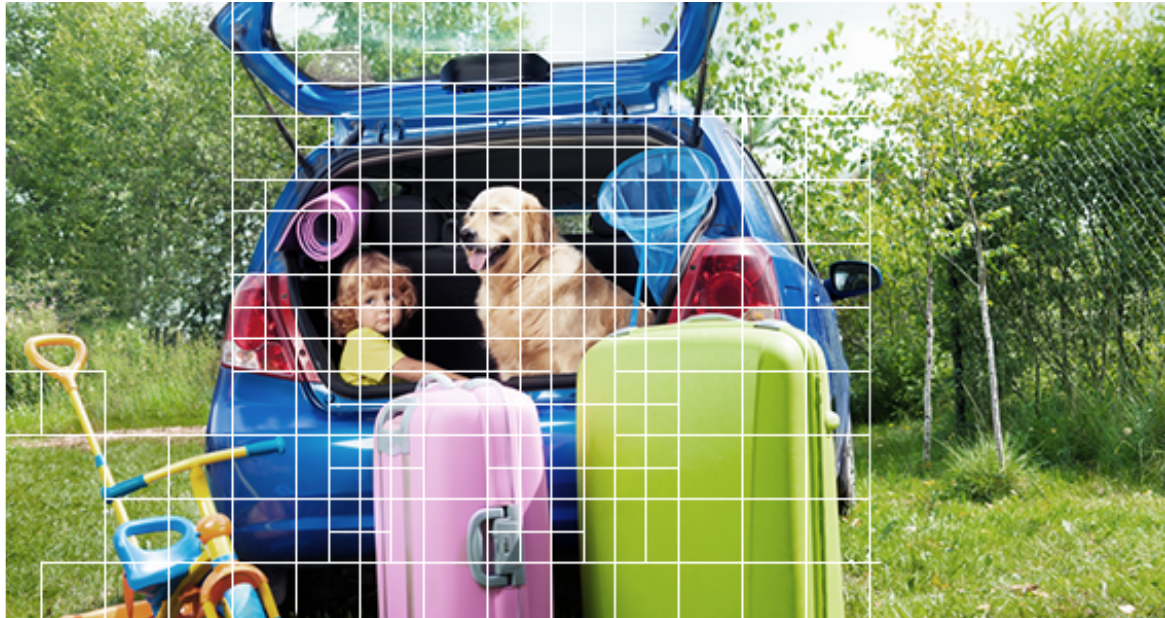
H.264 (Mainstream Video Compression)



Required Bandwidth



Required Storage Space



H.265 (Upgraded Video Compression)



Required Bandwidth

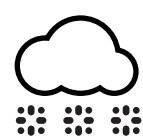
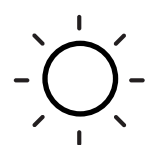


Required Storage Space



## Fearless in any weather.

Rated with IP65 protection, the DB1C doorbell works reliably in rain, sleet or snow, bringing you peace of mind throughout the year.

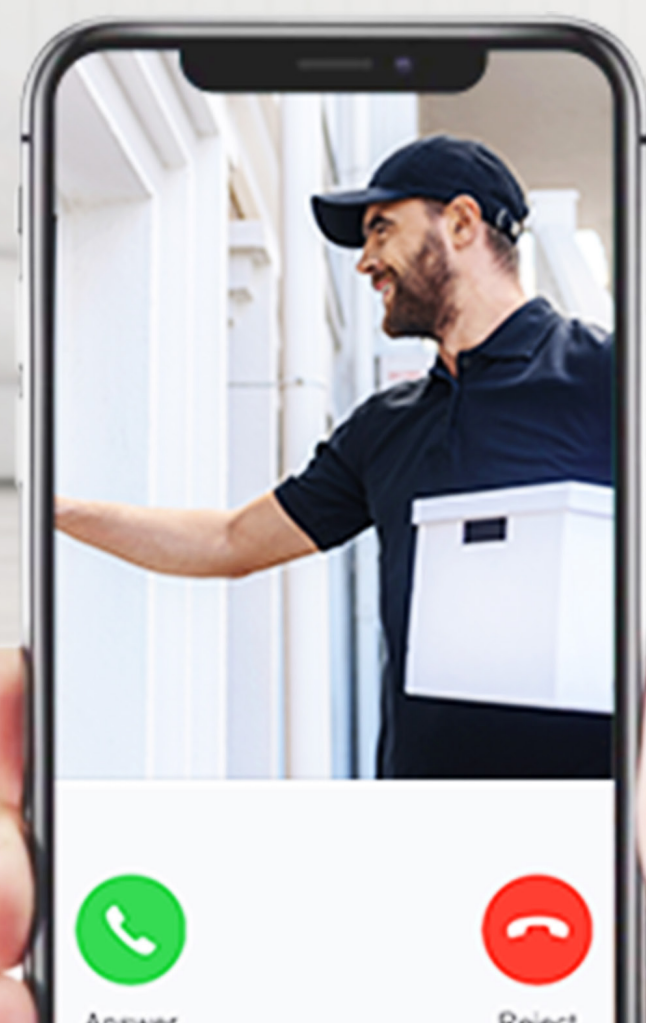




## Included chime keeps you in-the-know.

---

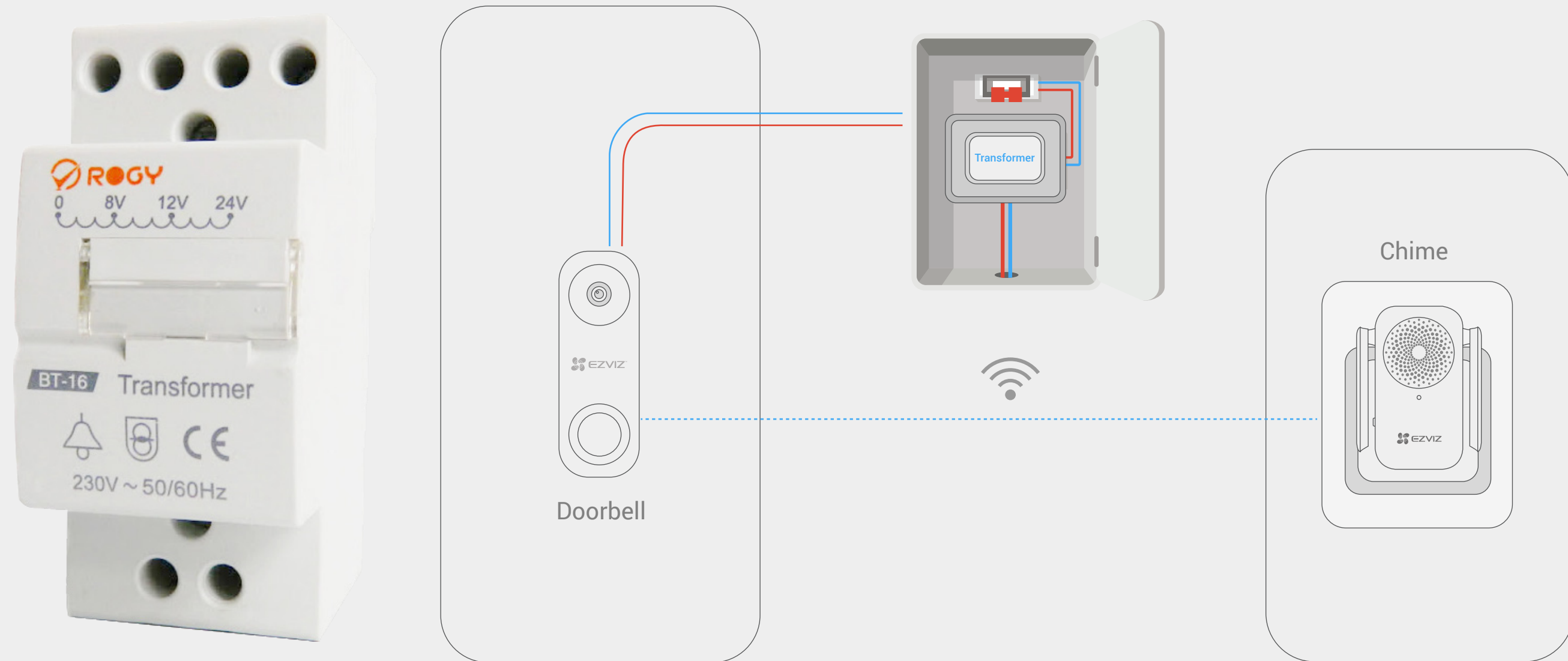
This chime rings at up to 72 decibels within a three-meter radius and it comes equipped with 20 pleasant ringtones to choose from. You never miss a visit at home even without your phone. Or, mute the chime when you don't want to be disturbed.






## Standard transformer included.

Converting the 230 VAC input voltage to a smooth 8, 12, or 24 VAC regulated output voltage, this Standard Transformer provides a constant power supply to ensure your DB1C doorbell works correctly and safely.



 Warning: For your safety, it is recommended that you ask a licensed electrician to install the transformer.



# We protect your data and privacy.

Protecting your data and privacy is our highest priority. Data transmission between the device and the EZVIZ Cloud is encrypted from end to end. Only you have the keys to decrypt your data.



**AES 128-bit  
encryption**

**TLS encryption  
protocol**

**Multiple  
authentication steps**



# Specifications CS-DB1C-A1-1E2W2FR

## Camera

Image Sensor	1/2.4" Progressive Scan CMOS
Lens	2.1 mm @ F2.4, view angle: 170° (Vertical)
Day & Night	IR-cut filter with auto-switching
Night Vision	Max. 5 m (16.4 ft.)

## Video

Max. Resolution	1536 x 1536
DNR	3D DNR
WDR	Digital WDR
Video Compression	H.265 / H.264
Frame Rate	Max: 15 fps; Self-adaptive during network transmission

## Interface

Storage	H.264 / H.265
Audio Input	Ultra-HD; HD; Standard. Adaptive bit rate.
Audio Output	Built-in high-power speaker
Reset button	Yes

## Network

Intelligent Alarm	Motion detection (with person-shape detection)
Video Intercom	Long-distance video two-way talk
Protocol	EZVIZ cloud proprietary protocol
Interface Protocol	EZVIZ cloud proprietary protocol

## Wi-Fi

Wireless	IEEE802. 11a/b/g/n, 2.4 and 5 GHz dual bands
Channel Bandwidth	Supports 20 MHz
Security	64 / 128-bit WEP, WPA / WPA2, WPA-PSK / WPA2-PSK

## General

Working Temperature	-10 °C to 45 °C (14 °F to 113 °F)
Working Humidity	95% or less (non-condensing)
Power Supply	AC 12 V to 24 V (220 mAh backup battery)
IP Grade	IP65
Weight	102 g (3.60 oz)
Dimensions	128.3 x 46.3 x 19.3 mm (5.05 x 1.82 x 0.76 inch)
Packaging Dimensions	172.5 x 102 x 97 mm (6.79 x 4.02 x 3.82 inch)



# Specifications CS-CMT-CHIME

## Network

Protocol	EZVIZ cloud proprietary protocol
Interface Protocol	EZVIZ cloud proprietary protocol

## Interface

Storage	No
Wired Network	Does not support
Power Supply Interface	EU/UK Standard Plug

## Wi-Fi

Wi-Fi Standard	IEEE802.11b / g / n
Frequency Range	2.4 GHz ~ 2.4835 GHz
Channel Bandwidth	Supports 20 MHz
Security	64/128-bit WEP, WPA / WPA2, WPA-PSK / WPA2-PSK
Transmission Rate	11b: 11 Mbps, 11g: 54 Mbps, 11n: 144 Mbps
Antennas	Dual External Antennas

## General

Operating Conditions	Temperature: -10 °C to 40 °C (14 °F to 104 °F), Humidity: 95 % or less (non-condensing)
Power Supply	100V - 220V AC
Power Consumption	Max 0.6 W
Dimension	100 × 55 × 35 mm (3.94 × 2.17 × 1.38 inch)
Weight	120 g (4.23 oz)



# Specifications CS-CMT-A0-Transformer

## Technical Data

Rated Input Voltage	230V AC
Rated Output Voltage	8V, 12V, 24V AC
Rated Frequency	50 Hz
Rated Power Output	8V: 10VA; 12V: 20VA; 24V: 30VA
Power Consumption	1.15 W
Service Period	Continuous operating
Connection Terminals	Pillar terminal with clamp
Connection Capacity	Rigid conductor 10 mm <sup>2</sup>
Installation	On symmetrical DIN rail 35 mm panel mounting
Terminal Connection Height	H=15.5 mm
Operating Conditions	-5 °C to 40 °C (23 °F to 104 °F), Humidity 95 % or less
Dimensions	35.3 x 86 x 68 mm (1.40 x 3.39 x 2.68 inch)
Net Weight	323 g (11.4 oz)



## In the box:

- Doorbell
- Chime
- Standard Transformer
- Mounting Plate × 2
- Plate Foam
- Power Kit
- Drill Bit
- Screwdriver
- Mounting Screw × 3
- Anchor × 3
- Wire connector × 4
- Security Screw
- Fixing Screw × 2
- Wire Harness
- Fuse Wire
- U-shaped Wire × 2
- Quick Start Guide

## Certifications:

UL / FCC / CE / WEEE / REACH / RoHS

Specifications are subject to change without notice. "🌈", "EZVIZ" and other EZVIZ's trademarks and logos are the properties of EZVIZ in various jurisdictions. Other brands and product names are trademarks or registered trademarks of their respective holders.

<https://www.ezvizlife.com/>