

SELECTED CRAFTSTONE
 VENEER OVER CRAFTSTONE
 ADHESIVE MORTAR ON 9mm
 ETERPAN FIXED ACCORDING TO
 VENTCLAD CONSTRUCTION
 DETAILS

25mm NO.8 CSK SS SCREW INTO
 BATTEN ONLY

APPROVED "H" MOULD BY
 OTHERS

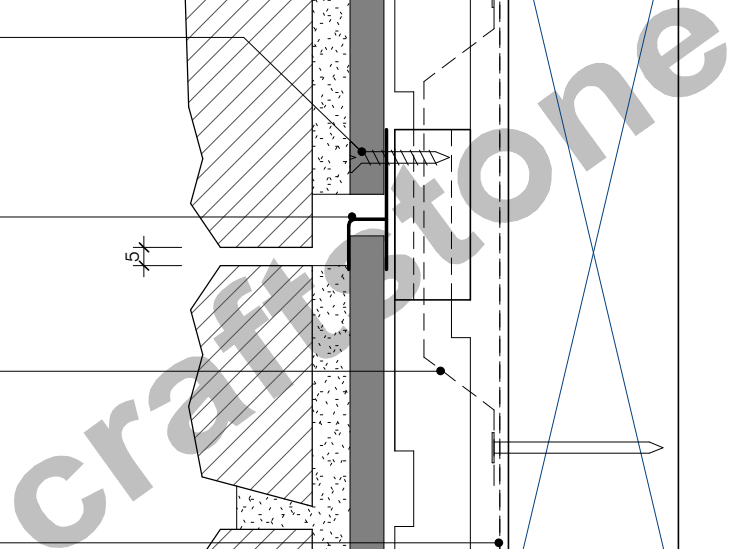
FIXING STRAPS FITTED AT 600
 CRS TO CLAMP BATTEN IN
 PLACE ALLOWING VERTICAL
 MOVEMENT RELATIVE TO FRAME

BUILDING UNDERLAY

VENTCLAD CAVITY SYSTEM

5

DETAIL AT INTER-FLOOR LEVEL



WWW.CRAFTSTONE.CO.NZ



HORIZONTAL CONTROL JOINT 1

F1
 SHEET

1 : 2 @ A4
 SCALE

02/28/12
 ISSUED

COPYRIGHT CRAFTSTONE NEW ZEALAND LIMITED
 CRAFTSTONE NEW ZEALAND ACCEPTS NO LIABILITY FOR DRAWINGS SUBMITTED TO COUNCIL

6C PIERMARK DRIVE, ALBANY, AUCKLAND, NEW ZEALAND - P: 09 447 3918 F: 09 447 3919
 P.O. BOX 302-613 NORTH HARBOUR 0751, AUCKLAND, NEW ZEALAND