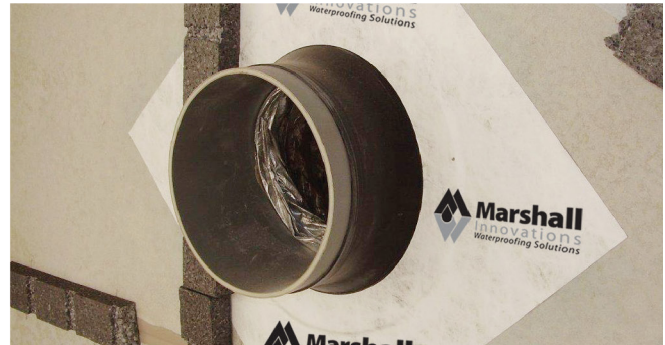


BUILDING ENVELOPE PENETRATION SEAL

Waterproofing Membrane for use on concrete masonry and polystyrene structures as a positive protection against water, salts and certain acids and alkalis.



Installation

- Select appropriate diameter TRADE-SEAL - collar should be tight.
- TRADE-SEAL collar extension should be trimmed to get the best fit.
- TRADE-SEAL must not be forced on to the penetration.
- Ensure the surface to receive the TRADE-SEAL is clean and dry.
- Remove backing paper and slide collar over penetration.
- Adhere TRADE-SEAL at 45° to aid moisture run off.
- Smooth TRADE-SEAL onto substrate to ensure adhesion.
- Push TRADE-SEAL collar back onto penetration to fit cavity width.

Sizes

8-12mm | 15-22mm | 25-32mm | 42-55mm | 50-70mm | 75-90mm | 100-110mm | 125-135mm | 150-165mm | 200-220mm

Sizes available to fit 8mm to 220mm diameter.

BENEFITS

- A one piece self adhesive collar for sealing around pipe and conduit
- A one component secondary flashing system
- Can be used on all accepted wall underlays including bituminous paper
- Can be installed on the inside of RAB systems and wall underlays - retrofit installation
- Requires no adhesives to hold in place
- Can be left exposed to Weather and UV for up to 90 days
- Will adhere to most clean and dry substrates including Fibre cement and Ply RAB board
- Forms part of the Marshall Weatherization System