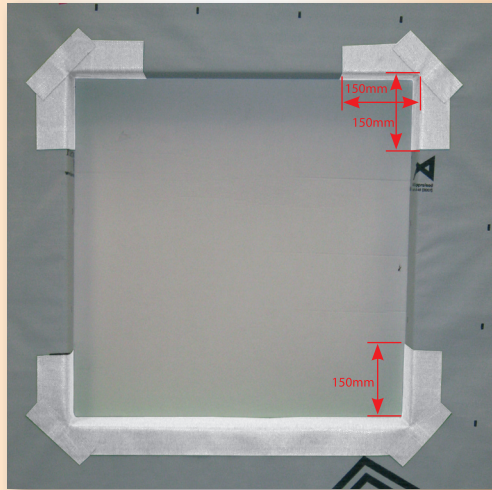


# TRADE-SILL

## The Builders Flashing Tape

### TRADE-SILL SIZES

- 50mm x 25m
- 75mm x 25m
- 150mm x 25m
- 150mm x 10m
- 200mm x 25m
- 250mm x 25m



- Can be exposed to UV for up to 90 days
- Simple Installation
- Superior Adhesion



**BRANZ Appraised**  
Appraisal No. 712 [2012]



**Marshall**  
Innovations  
Waterproofing Solutions

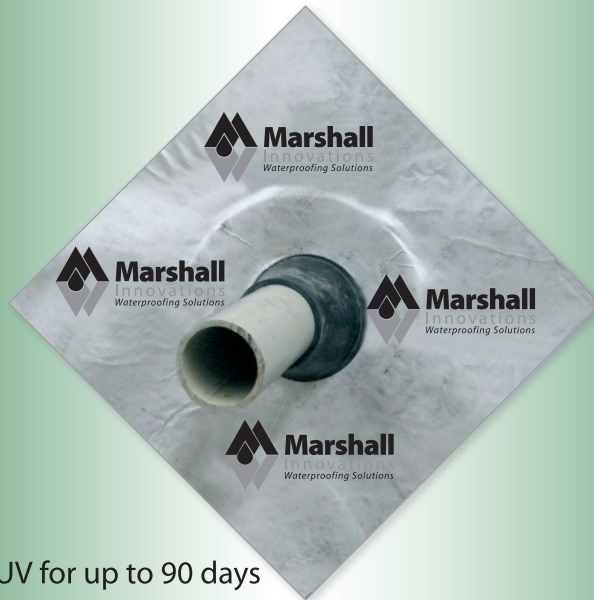
**TRADE**  
Range

# TRADE-SEAL

## Building Envelope Penetration Seal

### TRADE-SEAL SIZES

- 8mm - 12mm
- 15mm - 22mm
- 25mm - 32mm
- 42mm - 55mm
- 50mm - 70mm
- 75mm - 90mm
- 100mm - 110mm
- 125mm - 135mm
- 150mm - 165mm
- 200mm - 220mm



- Flexible Rubber
- Collar allows Trade-Seal to fit all pipe sizes up to 220mm



**BRANZ Appraised**  
Appraisal No. 719 [2011]

Can be exposed to UV for up to 90 days



# TRADE-FLASH

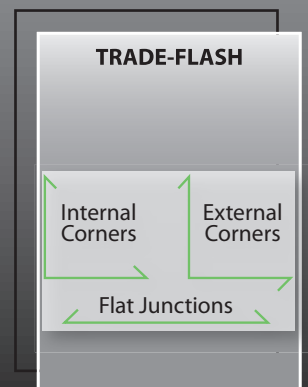
## The Flexible Back Flashing

### TRADE-FLASH SIZES

- 65mm x 2.7m
- 100mm x 2.7m



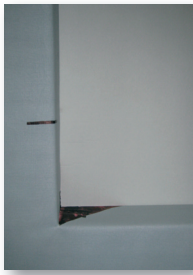
Flexible centre hinge allows flashing to be used as a flat internal, external or any angle back flashing.



## INSTALLATION



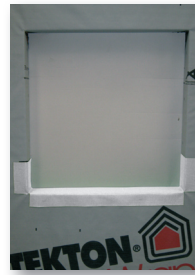
Cut and fix building wrap into opening. Cut tape to sill length + 300mm.



Mark 150mm up each Jamb as a starting point for tape application.



Keep tape flush with the inside edge of the opening. Progressively remove backing paper, while applying down the jamb, tightly into corner, across sill and up opposite jamb.



Slice tape back at corners, stopping 3mm from framing. Fold onto face of the framing.



HEAD - Cut a 300mm length of tape for each corner. Remove backing paper, fold in half with adhesive to the outside. Fit into corner and complete installation the same as for the sill corner.



Cut 4 pieces of tape 50mm x 150mm. Diagonally overlap corner 3mm and press firmly into place to form a seal.

## TRADE-SEAL

Is a one piece self adhesive collar for sealing around pipe and conduit. Sizes available to fit 8mm to 220mm diameter

# TRADE-SEAL



Select appropriate diameter **TRADE-SEAL** – Collar should be tight.

**TRADE-SEAL** collar extension can be trimmed to get the best fit.

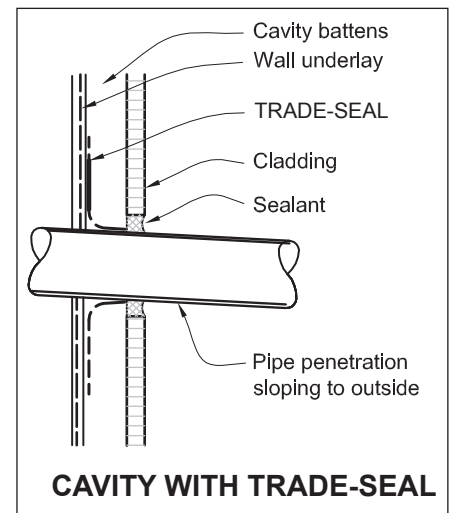
Ensure the surface to receive the **TRADE-SEAL** is clean and dry.

Remove backing paper and slide collar over penetration.

Adhere **TRADE-SEAL** at 45° to aid moisture run off.

Smooth **TRADE-SEAL** onto substrate to ensure adhesion.

Push **TRADE-SEAL** collar back onto penetration to fit cavity width



## TRADE-FLASH

Is an extrusion formed using two flat portions of hard PVC that are joined together by a soft PVC hinge.

# TRADE-FLASH



### *The Flexible Back Flashing*

The hinged middle section makes the **TRADE-FLASH** sufficiently flexible to be used as a flat, internal, external or any angle back flashing.

**TRADE-FLASH** incorporates a return on the outer edge of the flashing to contain any moisture.

**TRADE-FLASH** is used behind exterior cladding junctions as a moisture barrier to ensure any water or moisture that manages to get past the joint between the substrates is directed harmlessly to the outside of the dwelling.

**TRADE-FLASH** is easy to cut and fit onsite.